

Forty-Five Years of Excellence

Sailing Instructions

May 5-7, 2017



#YachtingCup

1. RULES

- 1.1. All racing will be governed by the *rules* as defined in the current Racing Rules of Sailing.
- 1.2. Rules regarding Handicaps, Certificates, Rating Authorities, Class Rules and MIRs will be as stated in the NOR.
- 1.3. Competitors encountering non-racing craft shall conform to the Inland Rules of the Road. No racing vessel has rights of way over a large commercial/naval deep draft ship. **Rule 41, 60.2, 63.1 and A5 are modified to add that the Race Committee (RC) may initiate a hearing against a boat infringing this instruction.**
- 1.4. NAVAL PROTECTION ZONE: The Naval Protection Zone is a 500 yard regulated area of water surrounding all US Naval Vessels of 100' or more. All vessels within 500 yards of a US Naval Vessel shall operate at the minimum speed necessary to maintain safe course and speed and shall proceed as directed by any official patrol. NO VESSEL IS ALLOWED WITHIN 100 YARDS OF A US NAVAL VESSEL.
- 1.5. US SAILING Prescriptions to RRS 63.2 and 63.4 will not apply. Appendix T (Arbitration) will apply.
- 1.6. Rule 55 is modified to add: "However, materials used for the banding of sails must be of bio-degradable nature (ie wool, cotton, etc) and may be discarded."
- 1.7. San Diego Yacht Club is the Organizing Authority.

2. NOTICE TO COMPETITORS

- 2.1. A competitor meeting for the Ton Cup only will be held at 1330 on Friday, May 5, on the Sail Wash Lawn.
- 2.2. A competitor meeting for the Pac52 fleet will be held at 0930 on Friday, May 5, on the Sail Wash Lawn.
- 2.3. A competitor meeting for the Saturday and Sunday races will be held at 0930 on Saturday, May 6, on the Sail Wash Lawn between the Main clubhouse and the Sailing Center.
- 2.4. Notice to competitors will be posted on the Official Regatta Notice Board located on the east wall (facing the water) of the Sailing Center.
- 2.5. Protest Hearing Notice Board will be posted by the Dockside Room on the east side of the Sailing Center.



Sailing Instructions – SDYC Yachting Cup – May 5-7, 2017

3. CHANGES TO THE SAILING INSTRUCTION

- 3.1. Any changes to these sailing instructions will be posted on the official regatta notice board not later than 1000 each day. At the same time, Code Flag L will announce that an amendment to the sailing instructions is available. If more than (1) amendment has been made the Race Committee will hoist L over a numeral pennant (2, 3, 4, etc.) the numeral of the pennant will be the number of the latest amendment. These flags will be accompanied by a sound signal.

4. SIGNALS MADE ASHORE

- 4.1. Signals made ashore will be displayed from the SDYC flagpole.

5. SIGNALS MADE AFLOAT/VENUE COMMUNICATION

- 5.1. When a visual signal is displayed over a class flag, the signal applies only to that class. In the absence of any class flags, the signal applies to all classes. (See RRS Race Signals)
- 5.2. In accordance with RRS 90.2 (c), oral changes to the Sailing Instructions may be made on the water. A change is in effect when the RC signal boat displays code flag L over A with one sound signal. This means “come within hail” of the RC Signal Boat to receive oral changes to the Sailing Instructions. The Race Committee may give oral changes to the Sailing Instructions to each boat by VHF or loud hailer and require acknowledgement.
- 5.3. Official communications for the different venues will be made on the following VHF Channels:
Ton Cup – Ch 69 * Near Roads – Ch 69 * Middle Roads – Ch 72 * Far Roads - Ch 73

6. CLASSES, CLASS FLAGS AND STARTING ORDER

- 6.1. **Ton Cup (San Diego Bay)**: Starting Order and Class Flags are as follows:

Note: Friday Groups may be different than Sat/Sun Div Breaks.

Group 1 (# 1 pennant), **Group 2** (# 2 pennant), **Group 3** (# 3 pennant), **Group 4** (# 4 pennant)

Near Roads: Initial starting order and class flags are as follows:

J/105 (# 1 pennant), **Schock 35** (# 2 pennant), **Ben 36.7** (# 3 pennant), **J/70** (# 4 pennant), **Div D** (# 5 pennant)

Middle Roads: Initial starting order and class flags are as follows:

Div B (# 1 pennant), **J/120** (# 2 pennant), **Flying Tiger** (# 3 pennant), **Div C** (# 4 pennant)

Far Roads: Initial starting order and class flags are as follows:

Pac52 (# 1 pennant), **Div AA** (# 2 pennant), **Farr 40** (# 3 pennant), **Div A** (# 4 pennant)

- 6.2. Competitors are not *required* to display class designator pennant (but it helps if you do).
- 6.3. Boats not involved in a starting sequence shall keep clear of the starting area and those boats preparing to start. See RRS 23.1
- 6.4. There will be a minimum of 1 minute between the start signal for a fleet and the warning signal for the next fleet.
- 6.5. Race Committee may combine fleet starts. If they elect to do so, they will communicate via the appropriate radio channel (see SI 5.3) prior to the start of the sequence.

7. SCHEDULE OF RACES:

7.1. Friday, May 5:

- 7.1.1. 0830-0930 Registration **for Pac52s only**, 0930 Pac52 Skippers’ Brief, 1130 Pac52 first warning. Three races are scheduled; Reception to follow.
- 7.1.2. 1000-1700 Registration for **Yachting Cup** and **Ton Cup**.
- 7.1.3. Ton Cup: 1330 Skippers Brief, 1500 Warning. One race is scheduled; Reception to follow.



Sailing Instructions – SDYC Yachting Cup – May 5-7, 2017

- 7.2. **Saturday, May 6:** 0830 – 0930 **Yachting Cup** Registration, 0930 Skippers Brief, 1130 First Warning. Four ocean races are scheduled; Reception to follow.
- 7.3. **Sunday, May 7:** 1130 First Warning, Three ocean races are scheduled; Awards following at approx. 1730. The Race Committee reserves the right to have more or fewer races each day to accomplish the races scheduled.

8. STARTING AREA

- 8.1. **Ton Cup Venue** will be in the vicinity of the east end of Harbor Island.
- 8.2. **Near Roads Venue** will be approximately 1.6 NM from light “Z” on Zuniga Jetty, heading at 100° mag.
- 8.3. **Middle Roads Venue** will be approximately 2.7 NM from light “Z” on Zuniga Jetty, heading at 120° mag.
- 8.4. **Far Roads Venue** will be approximately 3.8 NM from light “Z” on Zuniga Jetty, heading at 140° mag.

9. CHECK IN

- 9.1. Prior to the warning for the first race each day, each yacht shall check-in with, and be recognized by, the Race Committee (R/C) located on a vessel near the leeward end starting mark “S” and displaying the Code Flag “L,” by passing close aboard, on starboard tack and hailing her sail number. When a yacht has been recognized, the R/C will hail the yachts sail number. Yachts failing to check-in properly may not be scored.
CHECK-IN VIA RADIO NOT ALLOWED.

10. THE COURSE

- 10.1. The course will be selected from the attached day appropriate Course Description. This illustration shows the courses, the order in which the marks are to be rounded and passed and the side on which each mark is to be left.
- 10.2. Course signals from the R/C vessel at the starboard end of the starting line for each class are as follows:
The number of the course to be sailed will be signaled using placards.
The approximate bearing to the weather mark will be signaled using placards.
The approximate distance from the start line to the corresponding weather mark (1 or 1A) will be signaled using placards.
- 10.3. In the event Mark 2 is replaced by a leeward gate, boats shall pass through the two gate marks from the direction of the previous mark before proceeding on to the next leg of the course.

11. MARKS

- 11.1. **Ton Cup Bay Race** marks will be as follows:
Mark S will be a white cylinder.
Mark X will be a yellow tet.
Other marks of the course will be San Diego Channel markers.
- 11.2. **Near Roads** marks will be as follows:
Marks 1 and 2 will be yellow tets. If used, Mark 1a will be a green tet.
New Marks 1 and 2, per SI 14, will be orange tets. New Mark 1a will be an orange tet w/ black cap
Mark S will be a white cylinder
Mark F will be an orange shape
- 11.3. **Venue B (Middle Roads)** marks will be as follows:
Marks 1 and 2 will be red cones.
New Marks 1 and 2, per SI 14, will be yellow tets.
Mark S will be a yellow cylinder
Mark F will be an orange shape



Sailing Instructions – SDYC Yachting Cup – May 5-7, 2017

11.4. **Venue C (Far Roads)** marks will be as follows:

Marks 1 and 2 will be yellow cones. If used, Mark 1a will be a yellow cone w/ black cap.

New Marks 1 and 2, per SI 14, will be orange tets. New Mark 1a will be an orange tet w/ black cap.

Mark S will be a white cylinder

Mark F will be an orange shape

12. **THE START**

12.1. The starting line will be between a staff with an orange flag displayed on the R/C vessel at the starboard end of the starting line and Mark "S" on the port end.

12.2. If there is a significant wind shift during the start sequence, a *new* windward mark may be set for classes NOT YET STARTED. This change will be signaled by displaying Flag C over each of the affected classes' class flags during their start sequence. The new Mark 1 or Mark 1a will be as described in SI 11. When, in subsequent changes of course, a new mark is replaced, it will be replaced with an original mark.

13. **RECALLS**

13.1. As a courtesy, the Race Committee will attempt to hail boats "On Course Side" (OCS) as soon as possible after the start. Boats will be hailed as such on the corresponding VHF radio channel. See SI 5.3.

13.2. Failure of electronic equipment, failure to hear a hail, order of hail, or delay in hailing will not be grounds for redress. This modifies RRS 62.1 (a).

14. **CHANGE OF THE NEXT LEG OF THE COURSE**

14.1. To change the next leg of the course, the Race Committee will lay a *new* mark (or move the finishing line) and remove the original mark as soon as practicable. When in a subsequent change a new mark is replaced, it will be replaced by an original mark.

15. **THE FINISH**

15.1. The finish line will be between a staff displaying an orange flag on R/C vessel and a nearby mark as described in the course chart.

16. **PENALTIES**

The first two sentences of rule 44.1 are changed to: 'A boat may take a One-Turn Penalty when she may have broken a rule of Part 2 or rule 31 while racing. However, when she may have broken a rule of Part 2 while in the zone around a mark other than a starting mark, her penalty shall be a Two-Turns Penalty.'

17. **TIME LIMIT**

17.1. For the Ton Cup on Friday, the time limit is 1800. Any boat not finished by 1800 will be scored DNF. This changes Rules 35, A4 & A5.

17.2. On Saturday, the time limit is 1800. If no boat in a class has finished the race in progress by the time limit, the race for that class will be abandoned. After the first boat in a class sails the course and finishes within the time limit, succeeding boats in that class still racing and who fail to finish by 1830 will be scored Did Not Finish (DNF). This changes Rules 35, A4 & A5.

17.3. On Sunday, no race will be started after 1500. Boats not finished by 1630 will be scored DNF. This changes Rules 35, A4 & A5.



Sailing Instructions – SDYC Yachting Cup – May 5-7, 2017

18. PROTESTS

- 18.1. A boat intending to protest about an incident that occurs in the racing area shall notify the race committee finish boat of her intention, including the sail number of the boat(s) being protested. This shall be done after finishing or retiring. This changes RRS 61.1(a).
- 18.2. Protests shall be in writing. Forms are available under the Official Regatta Notice Board, and must be delivered to the Dockside Room (facing the water on the east side of the Sailing Center) within 1 hour after the race committee boat for the respective venue docks.
- 18.3. The docking time and protest time limit for each venue will be posted on the Official Regatta Notice Board and on the Protest Hearing Notice Board.
- 18.4. A list of boats involved in protests, hearing times, and disposition will be posted on the Protest Hearing Notice Board located in front of the Dockside Room (facing the water on the east side of the Sailing Center).
- 18.5. Arbitration or protest hearings may commence promptly upon receipt of forms. It is the responsibility of each boat to check the hearing notice board and be properly prepared to attend the hearing in a timely manner.
- 18.6. Arbitration: In accordance with Appendix T2, for protests involving an infringement of a rule of Part 2 or rule 31 of the RRS, an Arbitration hearing will be held prior to the protest hearing.

19. HAULOUT RESTRICTIONS

- 19.1. Boats not racing shall remain in the water for the duration of the regatta except with and according to the terms of prior written permission of the Race Committee. All trailers will be stored at the direction of the SDYC Dockmaster.

20. SCORING AND AWARDS

- 20.1. Scoring Results are located online at <http://www.yachtingcup.com/results> and on the official notice board.
- 20.2. All awards will be awarded as soon as possible after the conclusion of racing on Sunday.
- 20.3. Handicap scoring
 - 20.3.1. The Ton Cup will utilize RLC ratings
 - 20.3.2. The Yachting Cup will utilize buoy ratings for PHRF classes.
 - 20.3.3. All handicap scoring for PHRF Corrected Time will be calculated using the Time on Distance method.
- 20.4. Ton Cup
 - 20.4.1. All divisions will sail to RLC PHRF Handicaps to determine class winners.
 - 20.4.2. The Ton Cup race will not count toward Yachting Cup scores.
- 20.5. Yachting Cup
 - 20.5.1. For Saturday and Sunday (2 day) classes, seven races are scheduled. Three completed races will constitute a series. A boat's worst race score will be excluded when four or more races are completed.
 - 20.5.2. For the Pac52 fleet (3 day), ten races are scheduled. The fleet will be scored in accordance with Pac52 class rules; thus, no race scores for this fleet shall be excluded.
 - 20.5.3. The Organizing Authority will determine the Overall Winner of the Yachting Cup.



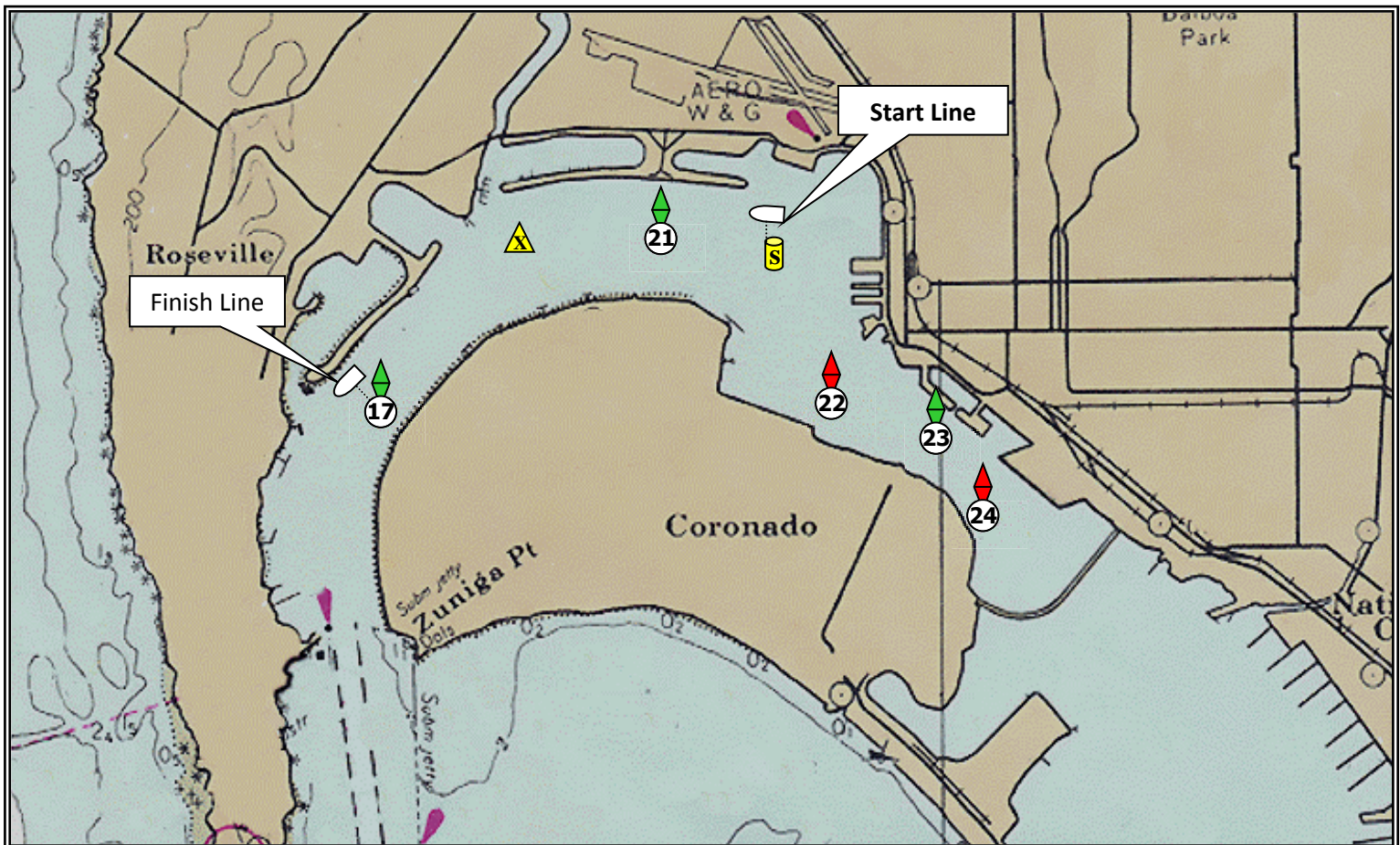
Sailing Instructions – SDYC Yachting Cup – May 5-7, 2017

Ton Cup Course Chart

All rounding marks are to port

Course	Marks	Distance
1	Start, X, 21, Finish (btw RC and 17)	Length 5.37nm
2	Start, X, 22, Finish (btw RC and 17)	Length 7.44nm
3	Start, X, 23, Finish (btw RC and 17)	Length 8.72nm
4	Start, X, 24, Finish (btw RC and 17)	Length 9.56nm

Reference Sailing Instruction 11 (Mark Configurations) for course variables.



Near, Middle, Far Roads Course Chart

Course	Marks	Course	Marks
2	S, 1a, 2, 1a, Finish	1	S, 1a, 2, Finish
4	S, 1, 2, 1, Finish	3	S, 1, 2, Finish
6	S, 1, 2, 1, 2, 1, Finish	5	S, 1, 2, 1, 2, Finish
8	S, 1a, 2, 1, Finish	7	S, 1a, 2, 1a, 2, Finish

Reference Sailing Instruction **10.3 (Gates)** and **11 (Mark Configurations)** for course variables.

